

Project Overview

One seamless 3D seismic dataset.

Incorporates 23 legacy 3D surveys using DUG's Advanced Broadband PreSDM workflow with FWI imaging.

Located over an area that has:

- Australia's largest Gas reserves – 3 LNG's
- Many undeveloped fields
- Significant exploration upside potential

BEX MC3D designed for:

- Basin scale & prospect/field specific evaluations
- Infrastructure-led exploration & development
- Increasing Australia's gas reserves
- Addressing growing LNG demand
- Identifying proximal CCUS projects

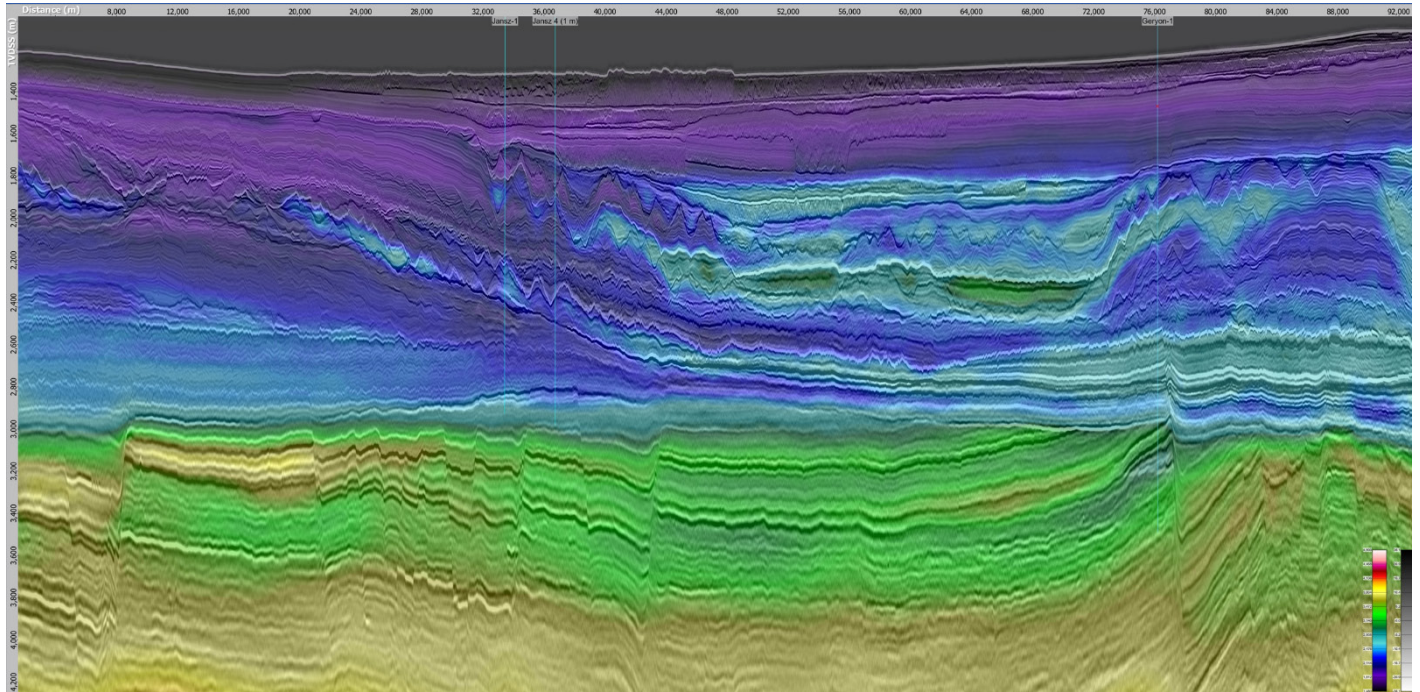
Deliverables

- Image gathers after migration
- Full fold stacks & angle stacks in time & depth
- Migration velocity fields
- Final processing report
- Regional interpretation study
- QI Studies

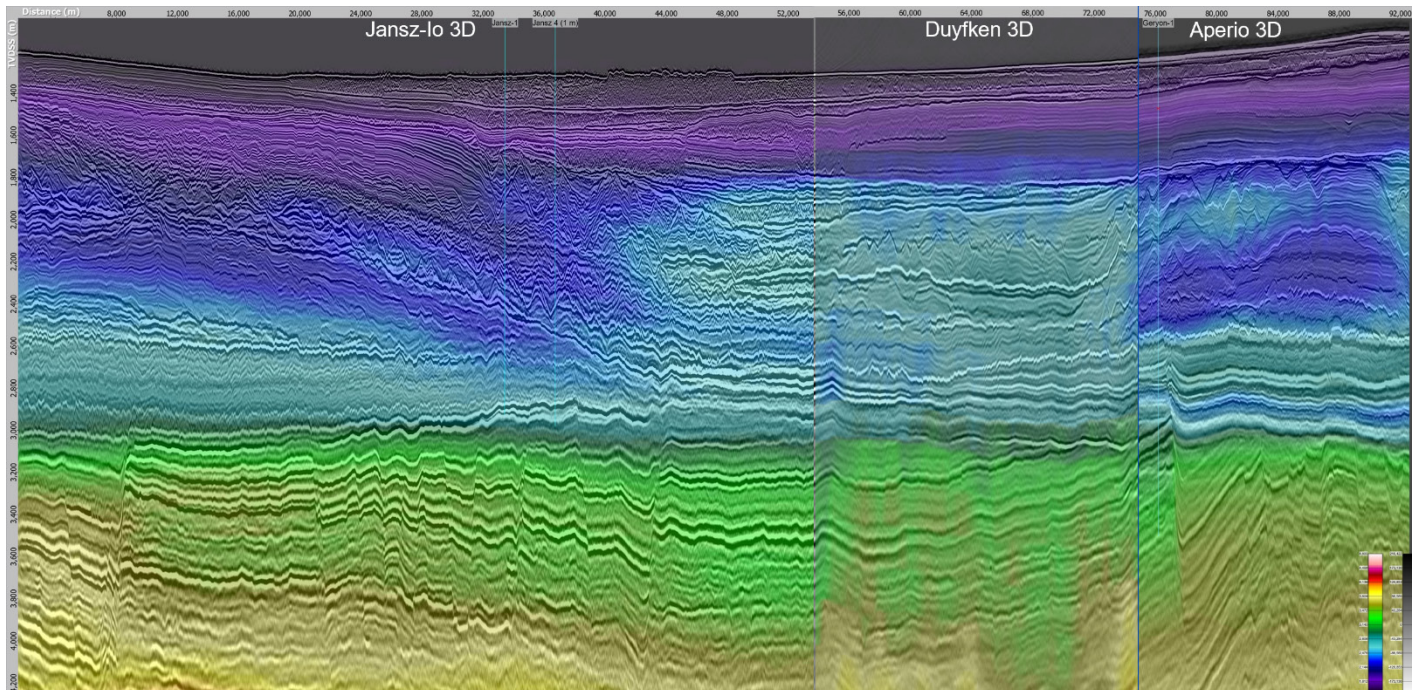
Sustainability

The BEX MC3D reprocessing project applied technology-neutral approaches to exploration data acquisition, creating more value from renewed seismic imaging for exploration and development of natural resources within producing basins. The multi-client business model allows multiple E&P companies to use the same data, thereby reducing the requirement for additional seismic surveying and significantly reducing impacts on the environment.

BEX MC3D Arbline – After Reprocessing



Legacy 3D Surveys Arbline – Before Reprocessing



For further information please contact:

Stephen Doyle

+61 404 640 867

stephen.doyle@mresources.com.au